

Sales Bulletin

Attention: All Furuno Distributors/Subsidiaries

SB No: FSB22-0018

Number of Pages: 5

Date: September 26, 2022

GPS/WAAS Chart Plotter with Fish Finder

Model: **GP-1871F**

Model: **GP-1971F**

New Software Version 5.0

INDEX

-
1. Improved Autopilot Screen
 - 1.1. FishHunter™ Drive – Mode Indication
 - 1.2. Heading Indication
 - 1.3. NAVpilot Engagement Message
 2. Others
 3. Version Details and Notes on Compatible Displays
 4. Software Update Options



1. Improved Autopilot Screen

FishHunter™ Drive offers unique boat control features achieved through joint development with FURUNO and Suzuki. In combination with the NAVpilot-300 and compatible Suzuki outboard engine models, unique features of Speed Control, Route Smoothing™, Auto Stop on Arrival, Point Lock™, and SABIKI Lock™ are available. The GP-1871F/1971F v5.0 supports mode and alert indications for FishHunter™ drive. In addition, display design and message indications on the Instrument page – Autopilot screens are refined. (See **Sales Bulletin FSB22-0005** for details of FishHunter™ drive.)







1.1. FishHunter™ Drive – Mode Indication

While the NAVpilot-300 is in Point Lock™ or SABIKI Lock™ modes, these modes are indicated on the GP-1871F/1971F. The following screenshots are from both Day and Night modes.



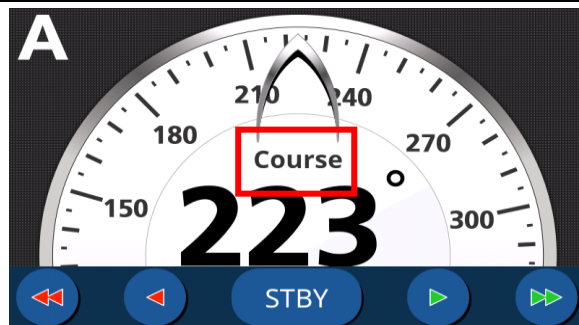
1.2. Heading Indication

The design of Autopilot screen on the Instrument page is changed. While the NAVpilot-300 or NAVpilot-711C is activated, the Autopilot screen on the GP-1871F/1971F will show the boat heading, instead of course.

Mode	New	Previous
Point Lock™ (NAVpilot-300 only)	 The image shows a semi-circular heading scale from 150 to 300 degrees. The needle points to 222. The text 'HDG' is highlighted with a red box. The 'POINT LOCK' logo is in the top left. A 'STBY' button is at the bottom.	 The image shows a semi-circular heading scale from 30 to 150 degrees. The needle points to 82. The text 'Course' is visible. The 'POINT LOCK' logo is in the top left. A 'STBY' button is at the bottom.
SABIKI Lock™ (NAVpilot-300 only)	 The image shows a semi-circular heading scale from 150 to 300 degrees. The needle points to 222. The text 'HDG' is highlighted with a red box. The 'SABIKI LOCK' logo is in the top left. A 'STBY' button is at the bottom.	 The image shows a semi-circular heading scale from 30 to 150 degrees. The needle points to 82. The text 'Course' is visible. The 'SABIKI LOCK' logo is in the top left. A 'STBY' button is at the bottom.
Others (E.g., SABIKI™, Orbit, etc.)	 The image shows a semi-circular heading scale from 150 to 300 degrees. The needle points to 222. The text 'HDG' is highlighted with a red box. A 'STBY' button is at the bottom.	 The image shows a semi-circular heading scale from 210 to 330 degrees. The needle points to 296. The text 'Course' is visible. A 'STBY' button is at the bottom.

Note:

In AUTO and NAV mode, the vessel course is shown as before.



1.3. NAVpilot Engagement Message

Conditions to indicate [NAVpilot engaged] and [NAVpilot disengaged] are changed.

Mode Transition		To					
		STBY	AUTO	NAV	Point Lock™	SABIKI Lock™	Others
From	STBY	—	Navpilot engaged *(1)	Navpilot engaged	Navpilot engaged *(1)	Navpilot engaged *(1)	Navpilot engaged *(1)
	AUTO	Navpilot disengaged *(1)	—	None **(2)	None	None	None
	NAV	Navpilot disengaged	None *** (3)	—	None *** (3)	None *** (3)	None *** (3)
	Point Lock™	Navpilot disengaged *(1)	None	None *** (3)	—	None	None
	SABIKI Lock™	Navpilot disengaged *(1)	None	None *** (3)	None	—	None
	Others	Navpilot disengaged *(1)	None	None *** (3)	None	None	—

Changed ones shown in **bold**:

*(1) Previously, no message was shown.

** (2) Previously, [Navpilot engaged] message was shown.

*** (3) Previously, [Navpilot disengaged] message was shown.

2. Others

- (1) **Change:** Manufacturer's Model Version for NMEA2000 is changed from 0xFFFF... to 1 (ASCII). (For GP-1971F new LCD type only)
- (2) **Change:** Some messages and Menu items are revised in no English menus.
- (3) **Change:** Descriptions of OSS are changed in [Home] – [Initial Setup] – [About] – [Copyright].
- (4) **Change:** An alert message for Point Lock™ will appear on the Plotter screen.
- (5) **Fix:** With Japan chart (newpec), [Max segment Found] message will not appear.

3. Version Details and Notes on Compatible Displays

The following table shows the detail of updated versions shown in [Home] – [Initial Setup] – [About].

Updated Item	Version	Previous
System Information – Software Version	1950193- 5.0.0R	-4.0.0R
System Information – Boot Version	1950194- 1.26.1R	-1.25.0R
System Information – Kernel Version	1950195- 1.35.2R	-1.33.0R
System Information – RootFS Version	1950196- 1.70.1R	-1.68.0R
FishFinder Information – Program Version	1950167- 01.09	-01.07

Note on compatible displays:

- (1) V5.0 and later will also be loaded on the GP-1971F with new LCD type when produced.
- (2) V5.0 will not be released for the SMD7/9. For the SMD7/9, the next software version is planned to be compatible with both GP-1871F/1971F and SMD7/9.

4. Software Update Options

The GP-1871F/1971F can be updated to v5.0 via microSD card or Wireless LAN in the same procedure as the previous v3.0 and v4.0. The update package will be available for public from **October 17, 2022**.

MicroSD Card	Wireless LAN
The software package of new version 5.0 will be posted to the product page of www.furuno.com website.	Update to v5.0 will be available via Wireless LAN.

Note:
Compared to v3.0, update to v4.0 and v5.0 takes longer because the content of Navionics chart capability, such as base charts, is also installed.

--- END ---

- All brand and product names are registered trademarks, trademarks or service marks of their respective holders.